



Red Dog Suvisi

2025 - Vol. 14, Issue 1

Blessing for Aktigiruk Project Access Road near Red Dog Operations

Teck's Aktigiruk Project is a lead-zinc project in the exploration stage that could potentially extend Red Dog's mine life beyond 2031.

In 2024, Teck received approval from the United States Army Corps of Engineers (USACE) for the construction of the 9-mile exploration access road needed to evaluate the project.

In December, guests from the communities of Noatak and Kivalina joined Teck and NANA leadership to bless the start of construction and the employees working on the access road. Taikuu to everyone who made this historic moment possible.



In this Issue

- | | | | |
|---|--|----|---|
| 1 | Blessing for Aktigiruk Project Access Road | 8 | In Pictures: Blessing for Aktigiruk Project |
| 2 | A Message from the General Manager | 10 | Exploration Access Road Construction Timeline |
| 3 | Red Dog Hero: Tristen Pattee | 11 | Aktigiruk Access Road |
| 4 | Protecting Caribou at Red Dog | 12 | Access Road Construction Updates |
| 5 | Community Reporter Program | 14 | Project Status |
| 6 | Iron Dog Icons, Taaqpak 120 | 15 | Construction map |
| 7 | Kobuk 440 | | |

A Message from the General Manager



Les Yesnik, Red Dog General Manager

Hi everyone! Summer is here and I hope you all are enjoying more time with family and connecting with friends. I am looking forward to all the great outdoors has to offer in Alaska this season.

It has been quite some time since the last edition of Suvisi was published. In this edition, you can learn how construction of the road to the Aktiguiq project advanced this winter after permitting approval was received. To kick off the project in December, NANA Elders blessed the construction crew and work progressed safely through the winter. You can also read about one of our local heroes, Tristen Nunagiat Pattee, who was presented with the Heroes Award for Transportation Safety by the American Red Cross for assisting a family in distress after a major storm caused intense flooding across much of Kotzebue in mid-October.

This time of year, we also prepare for and commence our annual water discharge. Work to ensure equipment was ready progressed in advance and discharge began in mid-May. All precipitation that contacts our site collects in the Tailings Management Facility and must be treated and released according to permit requirements. While the amount of precipitation this past winter was lower than normal, the average annual of precipitation continues to increase as the climate in our region changes. The Red Dog team is advancing completion of another program of projects that will enable an increase in the amount of water discharged annually. This is important to ensure no impact to our life of mine production plan by reducing the total water volume on site.

As in past years, we will begin to see freight barges arriving with the necessary production and project supplies needed for another year. Our Supply Chain department, made up of mostly NANA shareholders, will receive over 100,000 tons of freight this year. This team completed an incredible amount of work safely to prepare storage areas for this freight. This includes the work done to relocate freight from the Cold Storage Area adjacent to the Tailings Storage Facility. With increasing precipitation, materials needed to be relocated ahead of plan as the storage area was becoming inundated with water. Thanks to this entire team for your efforts!

So far, an excellent start to 2025 with no High Potential Incidents and the site achieved a million hours worked with no Lost Time Incidents in January. Concentrate production is progressing well and we are on track to achieve our production plan for the year. Thanks to all for your contributions so far.

Best regards,
Les

Red Dog Hero: Tristen Pattee recognized for saving family during Kotzebue flood

On March 18, the American Red Cross of Alaska honored Red Dog Environmental Technical Supervisor Tristen Nunagias Pattee with the Heroes Award for Transportation Safety. These awards are given to individuals who have gone above and beyond to save a life and make a significant impact in their communities across the state.

When a major storm caused intense flooding that impacted much of Kotzebue in mid-October, Jerry Jones and his 6- and 7-year-old boys were at their remote fishing cabin miles away from town. Emergency responders contacted Red Dog Mine as they knew about the company's rescue capabilities. Tristen, along with pilot Jaysen Danziger, volunteered for the operation.

Unable to fly in the dark, Tristen contacted Jerry who said he had prepared a bed and had a tarp to survive through the night. The next morning, Tristen and Jaysen met with the helicopter mechanic and Teck and Red Dog leadership to discuss the situation, ensuring the operation was as safe as possible for the crew and the stranded family.

As they made their way to the cabin's remote location, Tristen said he had to ready himself for any scenario. "I began preparing my mind for any outcome, when it involves children, it was difficult to think about," he said. "Regardless, we were prepared. As we approached, we saw the cabin surrounded by water."

"Once we saw them waving their arms, I was so excited and relieved that they were OK. I was very happy we were able to find a place to land safely — and retrieve them and get them to safety." After getting everyone safely on board the helicopter, the crew fed the shaken family and made their way to Kotzebue, where they were taken to the hospital to receive medical treatment.

Reflecting on the operation, Tristen said "I'm very thankful of Teck and Pathfinder leadership to make the decision that allowed us to use our resources to respond to these situations. Teck has a statement they convey daily which is 'everyone going home safe and healthy every day,' and they lived up to that, not only with their workforce but the community that surrounds them. I'm very proud of the NANA region and of course my Red Dog family for coming together to help each other in these situations."

Tristen first started at Teck in 2004 and returned in 2018 to join the Environmental Department.



Red Dog Environmental Technical Supervisor Tristen Nunagias Pattee receives the Red Cross of Alaska Heroes Award for Transportation Safety.



Left to right. Flora Lee, Lula Clara Sheldon, Katrina Adeline, Tristen Pattee, Tyler Baker, and Julia Visocsky.

Protecting caribou at Red Dog

Teck is committed to responsible resource development, while caring for the people, communities and land that we love. At Red Dog we are especially focused on doing our part to ensure that operations do not impact the caribou that residents rely on for traditional subsistence activities.

The Western Arctic Caribou Herd (WAH) population is at its lowest in over two decades, with 152,000 caribou in 2023, down from 500,000 in 2003. Caribou face various environmental stressors, especially due to climate change. The relative importance of each of the stressors on WAH population has not been quantified, but some are expected to have a much larger effect than others. For example, climate change causes impacts on caribou forage and contributes to difficulties in winter during freeze-thaw events.

A few major changes are taking place at Red Dog Operations, to ensure that we control the controllables and ensure we do not become another stressor to caribou populations.

- RDO's caribou policy previously set a speed limit of 55 mph and required traffic to stop when caribou are within 300 feet. One major change is that the speed limit on the Port Road is being reduced from 55 mph to 45 mph.
- Community reporters, NMS Trespass Officers and caribou observers will be driving the road day and night. They will be equipped with night vision binoculars and a night vision camera mounted to the truck to detect caribou in the dark. The caribou observers and community reporters were extremely successful in Fall 2024. They identified where caribou were present and helped the Port Road traffic know what they should do to ensure caribou can migrate in the fall.
- Red Dog Port is also participating in a caribou radar trial. The radar is going to be tested to determine if the operation can spot caribou a few miles away from the road. This would allow the traffic to adapt in advance to caribou migrations in the fall. If successful, additional radar units may be installed.

All these ideas have been the result of community input, driver input, NANA and the Red Dog Subsistence Committee. These changes aim to improve safety for hunters, RDO drivers, and caribou, ensuring better protection during migration periods.



Addressing shared interests through the Community Reporter Program



Becky Norton, Community Reporter

The Community Reporter Program plays a valuable role in strengthening shared understanding and supporting environmental stewardship.

Community reporters from Noatak and Kivalina work on-site at Red Dog observing activities and providing important perspectives to managers, workers and contractors. Their observations are documented in reports that are shared with NANA, Noatak IRA, Kivalina IRA and Kivalina City Council to ensure transparency and responsible practices based on mutual values of cooperation, sharing, respect for others and respect for nature.

For Becky Norton, a community reporter from Kivalina, this transparency is crucial. "It is very important to our communities that they know everything that is happening on-site that has an effect on Kivalina and Noatak. I know they deserve to know it all — good or bad," said Becky.

One of the key responsibilities of community reporters is monitoring wildlife, particularly caribou, to ensure rules for their protection and respect are followed.

Becky emphasizes the importance of this work, "I am there to make sure they are protected and respected. By that, I mean they are living their daily life by sleeping and eating — no matter where they are, especially on the Port Road. This is what we eat."

Becky reflects on a significant moment when she and her co-worker Millie encountered caribou for the first time near a gravel pit along the Port Road.

"There were six caribou at Pit 6, and we could not believe it," she recalled. "We already knew the steps and had the protocols, so now it was action!"

"First, we observed with binoculars and did a range check — they were clearly under 100 feet from the road. We called the hopper on the radio and reported the caribou and then they responded to all traffic on the Port Road with the announcement."

After observing the caribou, Becky and Millie followed procedures to halt all traffic in that section of the Port Road for the safety of the animals in the area. Becky said she was thrilled with how quickly everyone listened to their decision.

"Everyone listened," she said. "It stopped work for everyone on-site and outside on the road, but we respected the caribou, and our job was able to do that. I felt good at the end of the day."

Through the dedication of community reporters like Becky, the program continues to uphold shared interest of transparency, environmental stewardship and respect for local traditions.

Iron Dog icons hand out helmets to Kotzebue youth

In February, Pro Class racers in the Iron Dog, the world's longest, toughest snowmachine race, stopped in Kotzebue as they made their way through the Red Dog Loop. During this part of their epic 2,500-mile journey, racers attended a community event to sign autographs and help fit 100 custom KLIM snowmachine helmets for local youths.

Teck is proud to sponsor the Red Dog Loop, which cuts through the Northwest Arctic communities of Buckland, Selawik, Kiana and Noorvik.



Youths in Kotzebue were fitted with custom KLIM snowmachine helmets, as part of the Teck sponsorship of the Red Dog Loop.



Iron Dog racers Zack Weisz (left) and Casey Boylan (right) help fit youths with custom KLIM snowmachine helmets



Iron Dog racer Brad George signs autographs for local youth in Kotzebue

Taaqpak 120: A warm welcome in Noatak to mark a legacy of mushing



Photo credit: Sam Mills

Each spring, sled dog races such as the Taaqpak 120 and Kobuk 440 take place in the region. These races continue the tradition of dog mushing, which is an important part of the rich history that the Inupiat people continue to preserve.

On March 8, dog mushers made their way through the turnaround checkpoint and six-hour layover in Noatak during the annual Taaqpak 120 race. The 2025 race featured two local mushers from Kotzebue, Kevin Hansen and Bristol Huffman. Kevin arrived in Noatak at 6:15 p.m. and Bristol at 8:15 p.m., each welcomed with cheers and encouragement by the many community members who came out to show their support.

The Taaqpak 120 is held in memory of dog musher Elmer Taaqpak Howarth Sr. from Noatak. The Howarth family continued to honor their family's legacy through hours of work preparing, hospitality, and monitoring to ensure another year of race success. Teck is proud to sponsor the Taaqpak 120, as part of our Platinum Harness sponsorship for the Kobuk 440.

Results of the race: 1st place Kevin Hansen arrived in Kotzebue at 10:29 a.m., 2nd place Bristol Huffman arrived in Kotzebue at 2:54 p.m.

Celebrating traditional activities through Kobuk 440

In April, 11 racers embarked a 440-mile journey to compete in the 2025 Kobuk 440. The route starts in Kotzebue and loops through Noorvik, Selawik, Ambler, Shungnak, Kobuk, Kiana, finishing back in Kotzebue.

The Kobuk 440 Racing Association is a nonprofit run by volunteers across the region, with a mission dedicated to “enhancing and perpetuating the Inupiaq tradition of distance mushing in the Arctic,” and a vision that brings people together “to celebrate culture, way of life, respect for nature, and heritage.”

Teck’s sponsorship of the Kobuk 440, which includes Taapak 120 in Noatak and other junior races, reflects our values for traditional knowledge and activities.

Jessie Holmes from Nenana took first place for the fourth time this year. Kevin Hansen from Kotzebue took second place (after winning the Taapaq 120 earlier this year), and Rohn Buser from Talkeetna came in third.



Jessie Holmes takes an early lead out of Kotzebue.



Kevin Hansen trails close behind Holmes.

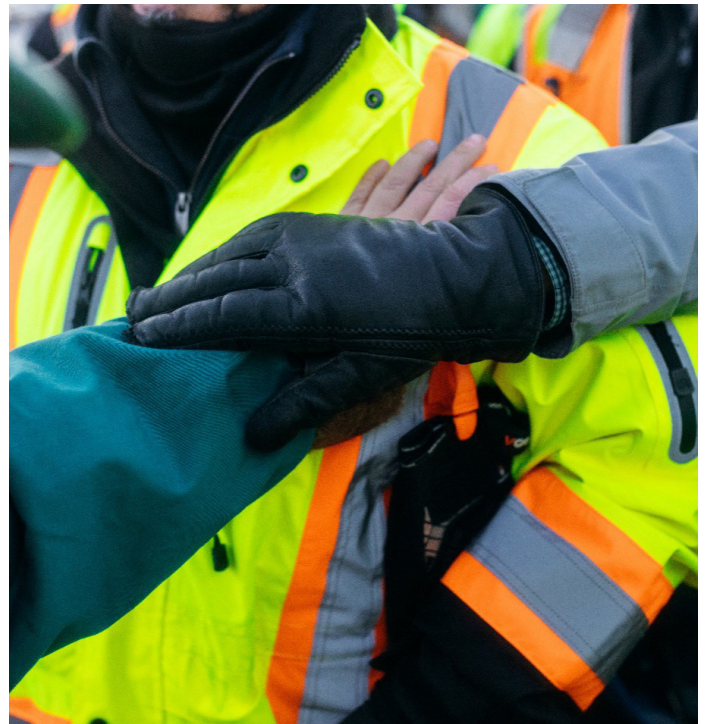


Racers depart Kotzebue for Noorvik.

In Pictures: Blessing for Aktigirug Project Access Road near Red Dog Operations



In Pictures: Blessing for Aktigiruaq Project Access Road near Red Dog Operations



EXPLORATION ACCESS ROAD CONSTRUCTION TIMELINE

2024-2025 WINTER

- Construct first layer of gravel access road to Material Site 4.
- Install Red Dog Creek Bridge.
- Install Grayling Junior Creek bridge.

2025-2026 WINTER

- Complete construction of gravel access to Material Site 4.
- Install Ikalukrok Creek bridges 1-3.
- Install material sites 1, 3 and 4.

BENEFITS OF WINTER CONSTRUCTION

- No flowing water.
- Minimized impacts on streams and wetlands.
- Provides a stable platform to build.

Please see the construction map on pages 14-15.

Aktigiruk Access Road

In 2024, Teck received 404 permit approval from the United States Army Corps of Engineers (USACE) for the construction of the exploration access road. This follows the receipt of all necessary regulatory approvals from other permitting agencies at the State of Alaska and the Northwest Arctic Borough.

This important milestone allows Teck to begin construction of the 9-mile access road needed to evaluate the technical and economic feasibility of two deposits which could potentially extend the Red Dog Mine's life beyond 2031. In partnership with Paa River Construction, Kuna Engineering, and NANA Construction, Teck began road construction December. Construction of the road is projected to take over two winter seasons with an anticipated completion in fall 2026.

Receiving this regulatory approval is a key step in extending the life of the Red Dog Mine. We are committed to continuing to collaborate with local communities, regulators and government to work toward responsibly extending anticipated mine life at Red Dog.

This milestone was achieved through collaboration between the Aktigiruk Project team, Red Dog Operations, and NANA Regional Corporation. We especially want to thank the Regional Elders Council, the Northwest Arctic Borough, and your Council for your support for the project.



Step 3: Placing first lift of gravel

Step 1: Snow removal and site preparation

Step 2: Laying out geotextile

Photo taken on Jan. 8, 2025 looking southeast.

EXPLORATION ACCESS ROAD CONSTRUCTION SITE UPDATES

Roughly 6 miles of road constructed as of May 2025.

STEP 1

Snow removal and site preparation.



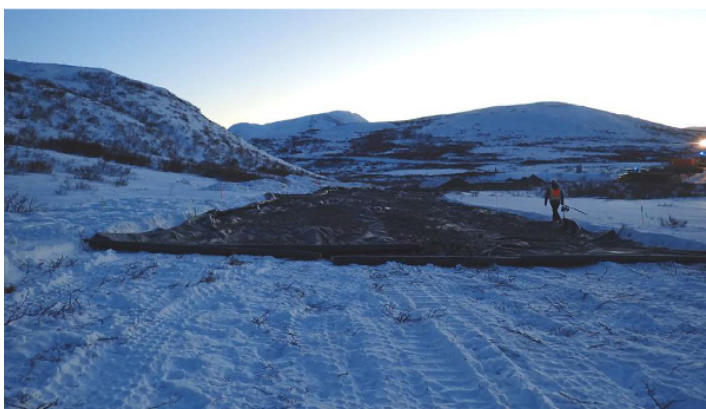
Carefully removing snow along the surveyed road alignment, while minimizing the disturbance to the surrounding tundra.
(Photo: Station 18 on Jan. 6)



Staking out ahead of construction.
(Photo: Station 72 on Feb. 16)

STEP 2

Laying out geotextile fabric.



Laying geotextile fabric over prepared area. As of Feb. 17, 6,500 linear feet of geotextile fabric has been installed. Geotextile is installed in most areas (60%) that are not bedrock to protect from water and keep the road stable. (Photo: Station 7 on Jan. 6)



Staking the road alignment, preparing the ground for protective textile fabric. (Photo: Station 10 on Jan. 6)

STEP 3

Placing first lift of gravel. So far, 33,226 cubic yards have been used.



Filling in low-lying areas to establish a rough base over geotextile fabric. This process levels the ground under the final road.

(Photo: Station 6 on Jan. 7)



(Photo: Between Stations 10 and 11 on Jan. 8)

STEP 4

Raising the road embankment.



Road embankment is placed to provide insulation of the permafrost as well as providing a level surface for vehicles on which to travel.

(Photo: Station 63 on Feb. 13)

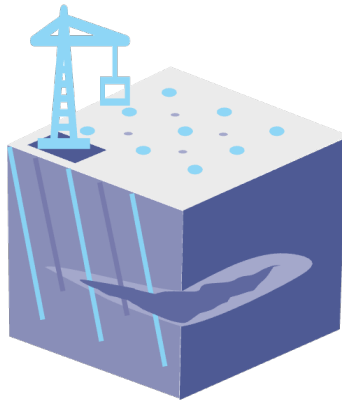


Layering and compacting fill material to raise the road above original ground level. (Photo: Station 45 on Feb. 8)

PROJECT STATUS

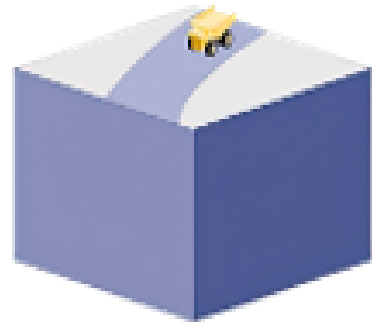
We are here

1



**Surface
Exploration**

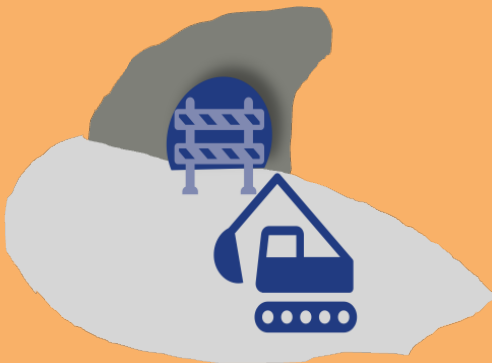
2



**Access
Road**

Future actions

3



**Underground (Entry)
Exploration**

4



**Underground
Exploration**

5



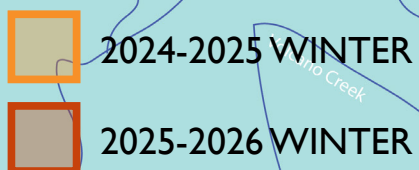
**Underground
Infrastructure**

6



**First
Production**

NANA Regional Corp. land



**NANA Regional
Corp. land**



Red Dog Operations



2525 C St
Suite 310
Anchorage, Alaska 99503



907-754-5168



rd-ca@teck.com



teck.com

Red Dog Operations is one of the world's largest zinc mines, located about 170 kilometers (105 miles) north of the Arctic Circle in northwest Alaska, near Kotzebue.