



Teck

TULSEQUAH CHIEF MINE

**2025 ANNUAL
FIELD PLAN
UPDATE**

May 3, 2025

SAFETY MESSAGE

**Everyone going home
safe and healthy
every day**



ABOUT TECK



Teck

WE ARE TECK

Teck is a leading Canadian critical minerals company focused on responsibly providing metals essential for global development and the energy transition.



100+ years of history as a Canadian company headquartered in **Vancouver, B.C.**



6 total operations in Canada, the U.S., Chile and Peru



Industry leading copper growth pipeline



Top 100 Employer in Canada for 2024



2024 Global 100 Most Sustainable Corporations



Teck

Driven by our purpose and values, we are building Teck into one of the world's leading providers of responsibly produced energy transition metals.

OUR PURPOSE

To provide the essential resources the world is counting on to make life better while caring for the people, communities and land that we love.

Our strategy is focused around four pillars:

CORE EXCELLENCE

Industry leading capabilities, processes and talent to drive us forward.

METALS FOR THE ENERGY TRANSITION

Focusing on the metals essential to meet growing demand driven by the energy transition.

VALUE-DRIVEN GROWTH

A rigorous approach to growth focused on value creation, balanced with returns to shareholders.

RESILIENCE

Ensuring we stay resilient and able to create value throughout market cycles.

Our Values

WHO WE ARE

- / Responsible and Courageous
- / Respectful and Inclusive
- / Humble and Driven

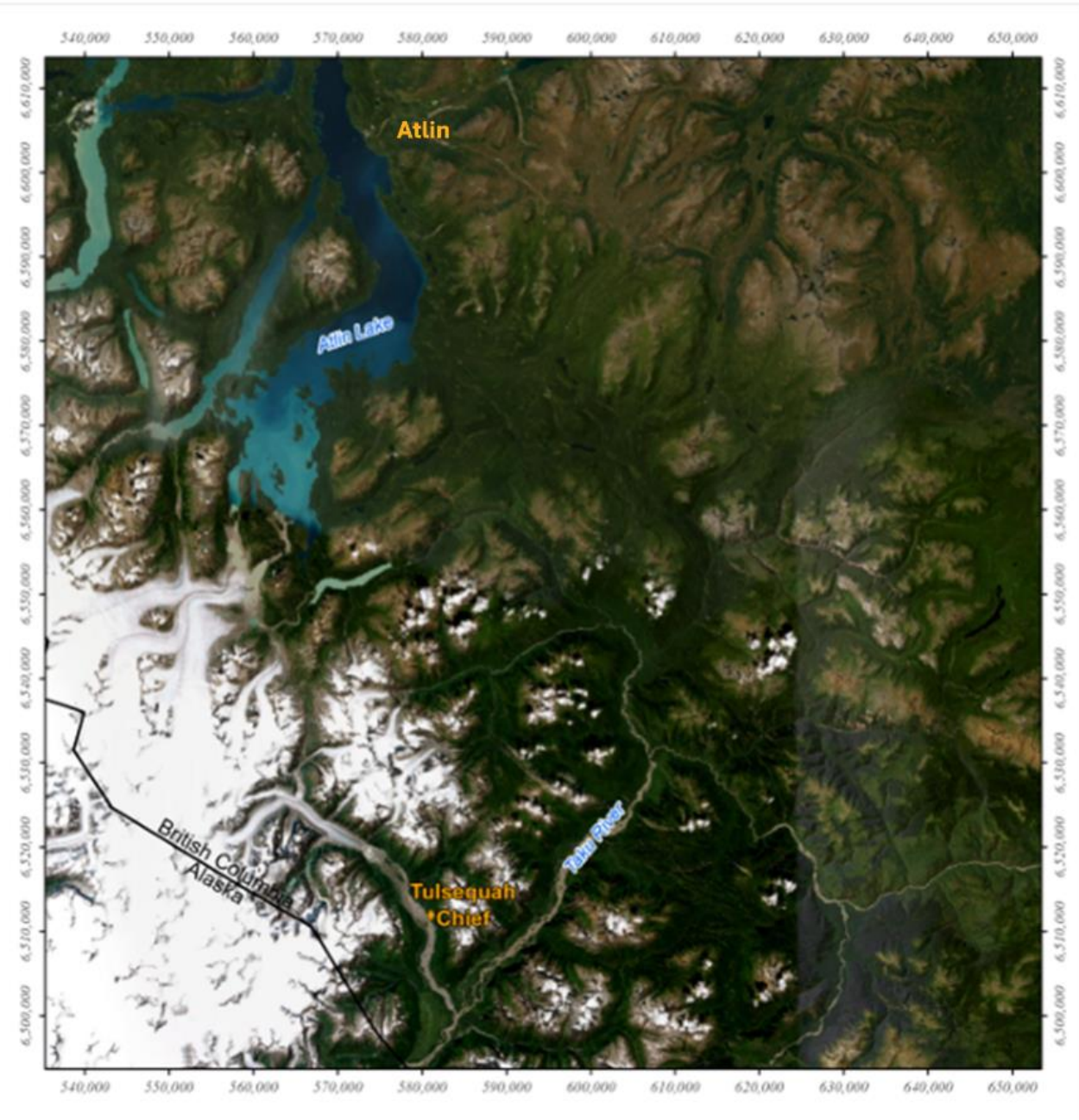
HOW WE OPERATE

- / Health and Safety
- / Sustainability
- / Excellence

THE TULSEQUAH CHIEF SITE - LOCATION

The mine is located approximately 100 km southwest of Atlin, British Columbia, on the Tulsequah River.

The mine is approximately 10 km upstream of where the Tulsequah River flows into the Taku River.

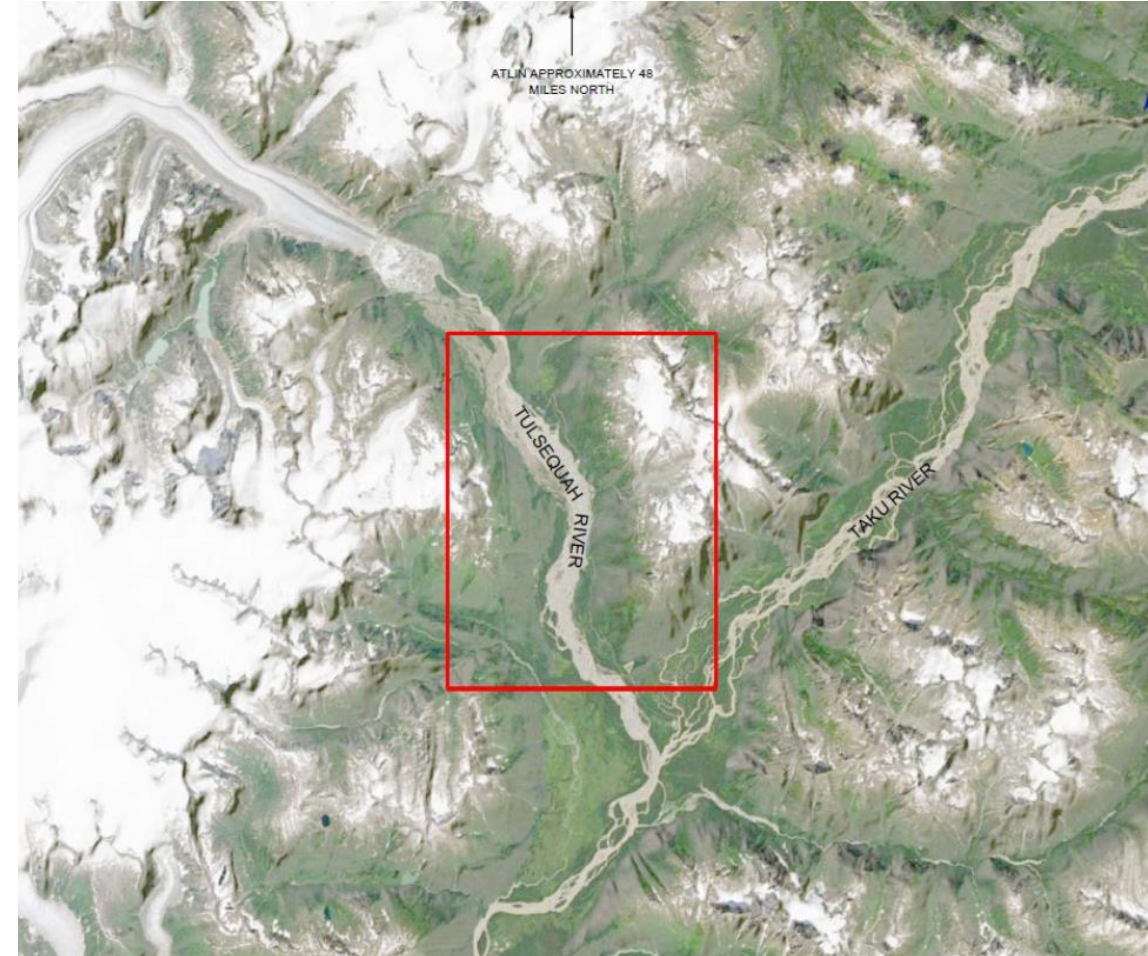


THE TULSEQUAH CHIEF SITE - OVERVIEW

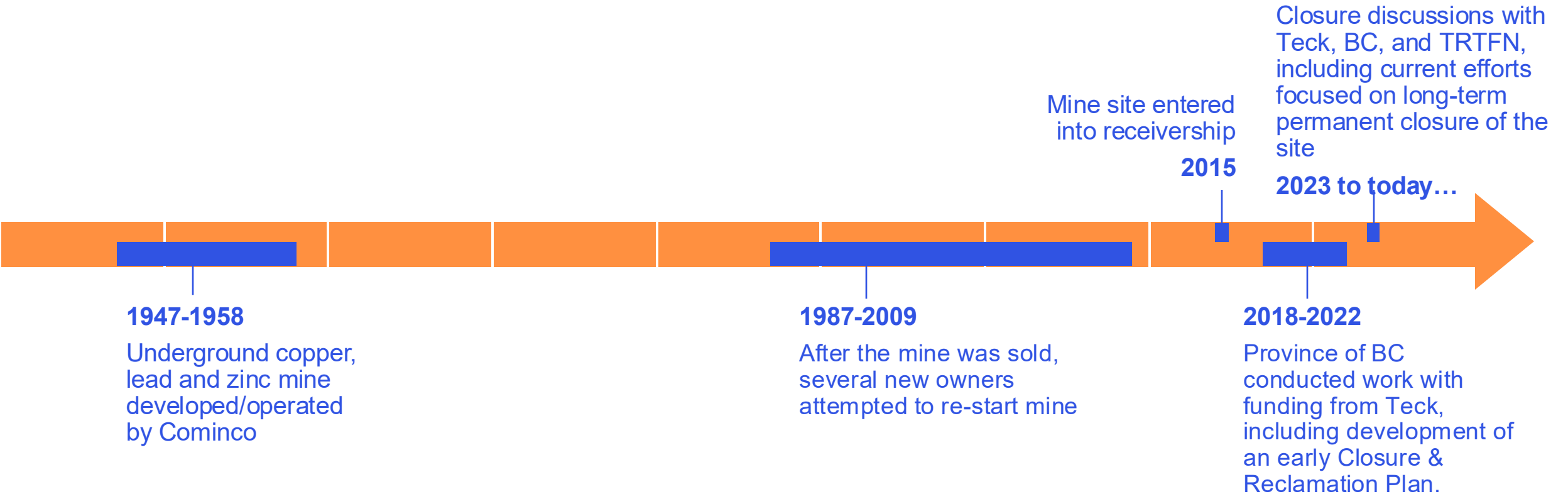
Historic underground copper, lead, and zinc mine, operated from 1951-1957

Our objective: Teck to work with TRTFN & Province on a final closure and reclamation plan for mine site

Ownership: Teck does not own the site or facilities, nor do we hold mining rights



TIMELINE OF THE TULSEQUAH CHIEF MINE



2025 PLANS



Safe Access

Re-establish safe, reliable access to site

Build temporary camp facilities to support fieldwork

Plan site visits with TRTFN, BC

Repair bridges 8 and 9, and reinforce north end of airstrip



Underground (U/G)

Secure underground entrance and workings

Advance drone investigations of underground



Water Management and Monitoring

Assess options for mobile water treatment unit

Install temporary sediment control measures

Collect water quality, sediment quality, and flow data from the mine water and the Taaltsuxéi Héen watershed

Develop computer model for mine water discharge



Mined Rock

Quantify the geochemistry of waste rock and ore stored on surface



Environment

Understand aquatic risk to life in Taaltsuxéi Héen

Understand what wildlife is in the area

Check soil for contamination around site

Understand potential changes in climate



Waste

Document volumes and types (hazardous, non-hazardous) wastes on site

Remove some hazardous waste from site

SAFE ACCESS



Re-establish safe, reliable access

Build temporary camp facilities

Plan site visits with TRTFN, BC & work with Taku Corp (ATELP)

Repair bridges 8 and 9

Reinforce north end of airstrip

Teck



SHAZAH CAMP

Assessing Mould



Assessing Electrical



TEMPORARY CAMP

Camp Seen From Air



Sleeping Tents



AIRSTRIP

Airstrip Surface

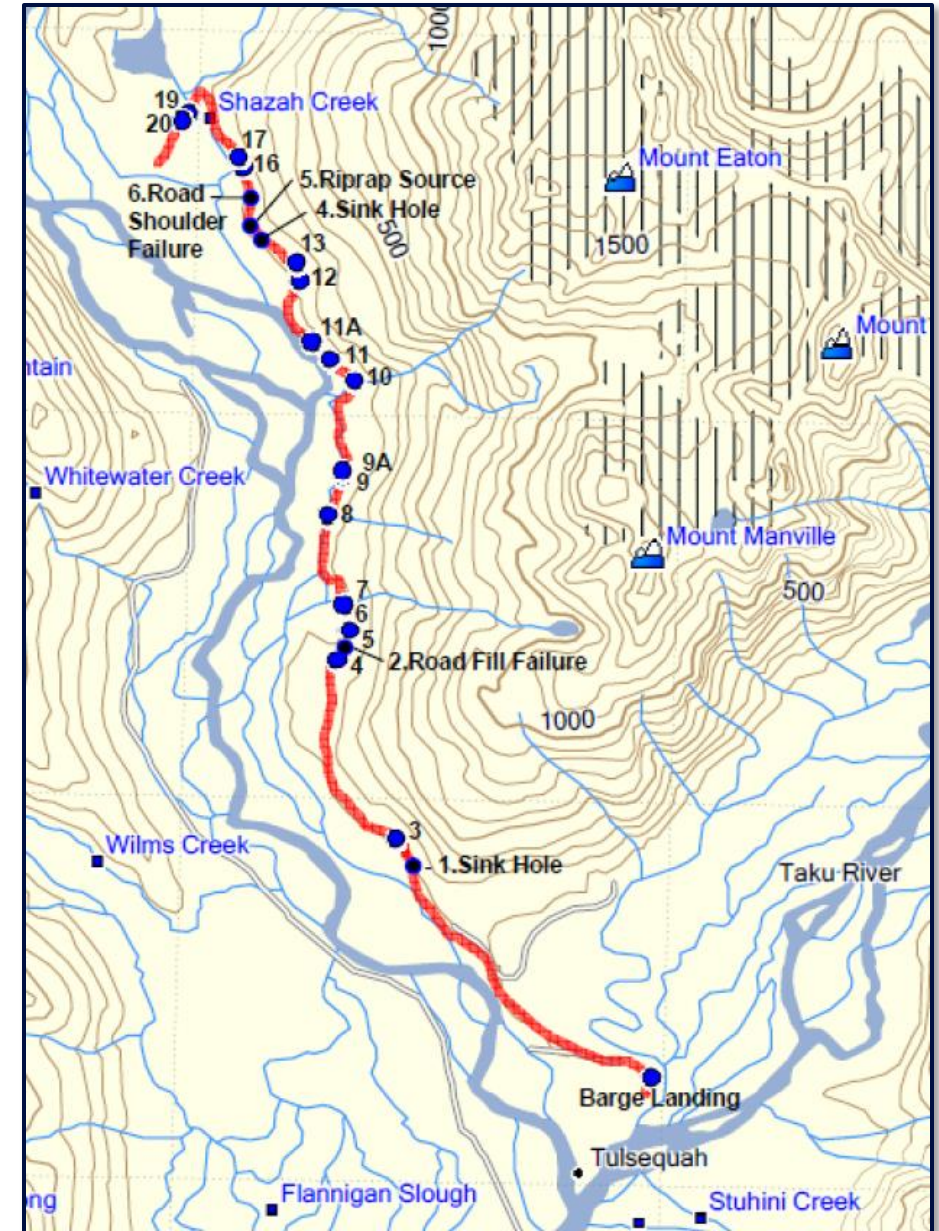


Weather Station & Camera



REPAIR BRIDGES 8 AND 9

- Structural assessments of bridges conducted in 2024.
- Recommendations for maintenance
 - Bridges 9 & 8 - Rebuild bridge decks
 - Bridge 8 - Rebuild abutment



BRIDGE 8



BRIDGE 9 ABUTMENT



BRIDGE 9



REPAIR NORTH END OF AIRSTRIP

- Damage to northern section of airstrip (2020 freshet)
- The Province hauled rock down to runway and placed along bank in 2021 – 1/3 of runway end reinforced
- Structural assessments of airstrip conducted in 2024
 - Additional work recommended to prevent further erosion
- This additional work proposed for 2025






 SUITE 3 - 385 BAKER STREET
 NELSON, BC, V1L 4H6
 Tel (250) 354-7883
 info@snteng.ca www.snteng.ca

PERMIT TO PRACTICE #:
 1001878

Designed LES THIESEN Date 2024/12/17
 Drawn M. DAVIES Date 2024/12/17

SCALE: AS SHOWN

Rev	Date	DESCRIPTION	Int
1	2023/02/03	ISSUED FOR COMMENTS	MD
0	2024/12/17	ISSUED FOR REVIEW	MD

RP/PR/14/18

UNDERGROUND

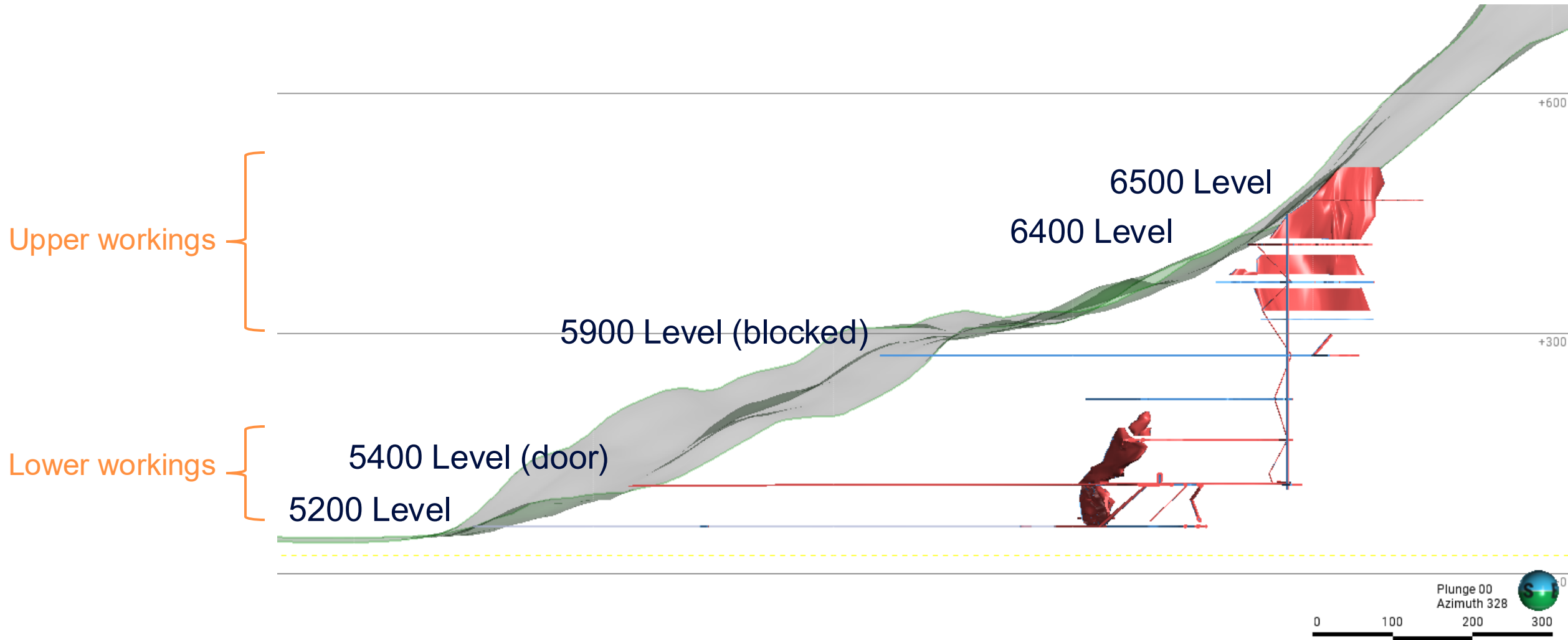


Drone investigations underground

Assess geotechnical risks, hazardous materials, and condition of entrances

Secure access to underground workings for safety, where possible

MINE WORKINGS



5200 LEVEL

May 2, 2025



5400 LEVEL

5400 Portal – July 31, 2024



5400 Portal – May 2, 2025



5900 LEVEL



6400 AND 6500 LEVELS

6400 Level – fully collapsed, at a fault
13 m from the surface



6500 Level – 57 m of drift was scanned via
drone in 2024



DRONE SURVEYS

5900 Level Adit



6400 Level Adit



MINED ROCK



Quantify the geochemistry of waste rock and ore stored on surface



WATER MANAGEMENT AND MONITORING



Assess options for mobile water treatment unit

Install temporary sediment control measures

Collect water quality, sediment quality, and flow data from the mine water and the Taaltsuxéi Héen watershed

Develop computer model for mine water discharge

Teck



LAST YEAR - WATER TREATMENT PLANT ASSESSMENT

ASSESSING PIPING



ASSESSING PLC PANEL



EXISTING WATER TREATMENT PLANT (WTP)

- Unknown whether the WTP could meet performance criteria or treat the flow.
- Still many unknowns about the existing plant:
 - Electrical
 - Equipment (lack of power and access)
 - Air lines and valves
 - Instrumentation (no programming)
- Based on the unknowns, we do not have plans to repair the WTP at this time.



SEDIMENT CONTROL

▲ Water monitoring locations

5400 portal

Straw Wattle or Silt Fence

5200 portal

3 x Silt Fences in Ditch

Straw bales and filter cloth below culvert

Straw bales with filter cloth below culvert

Install straw bales with filter cloth below culvert

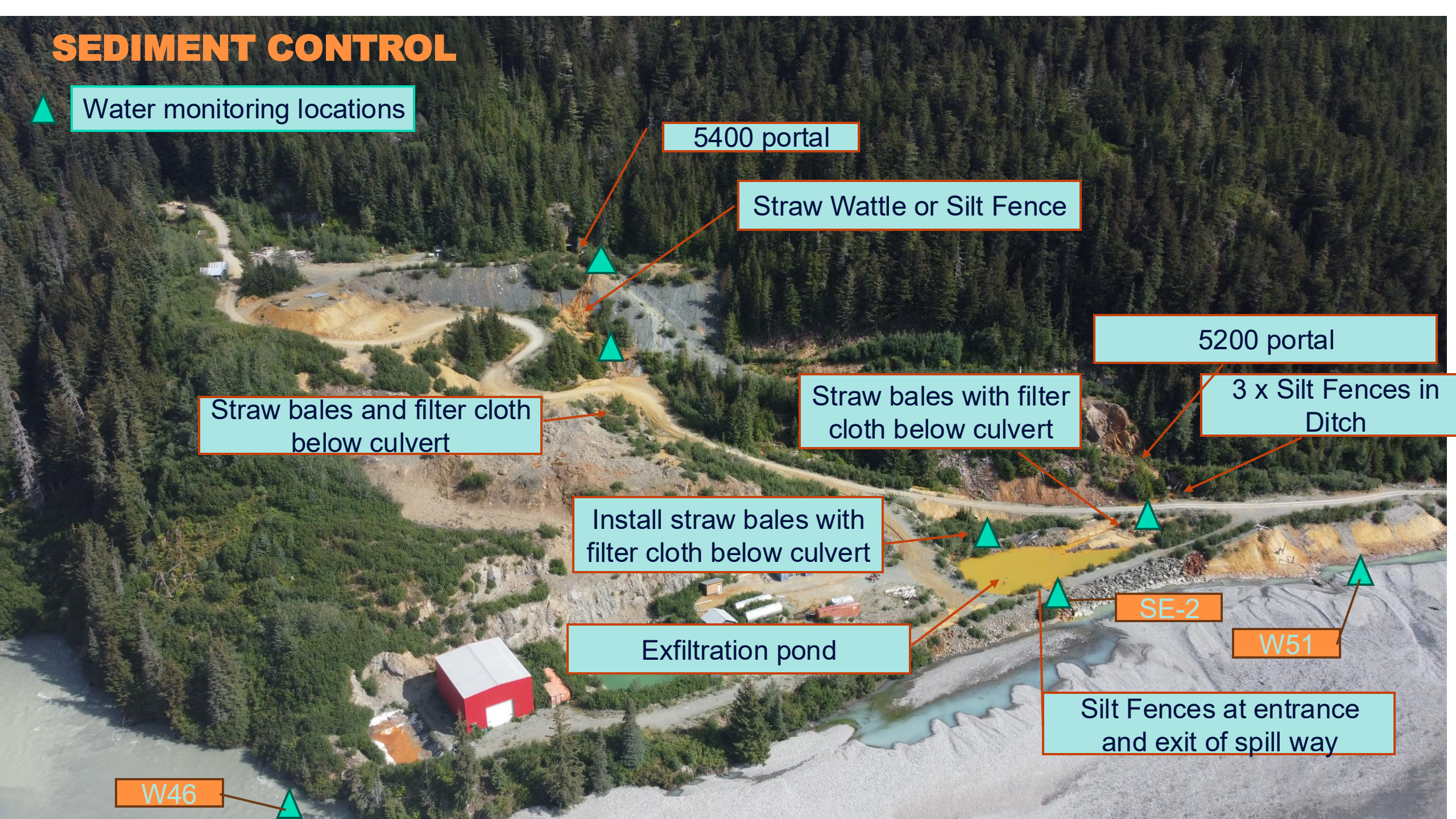
Exfiltration pond

SE-2

W51

Silt Fences at entrance and exit of spill way

W46

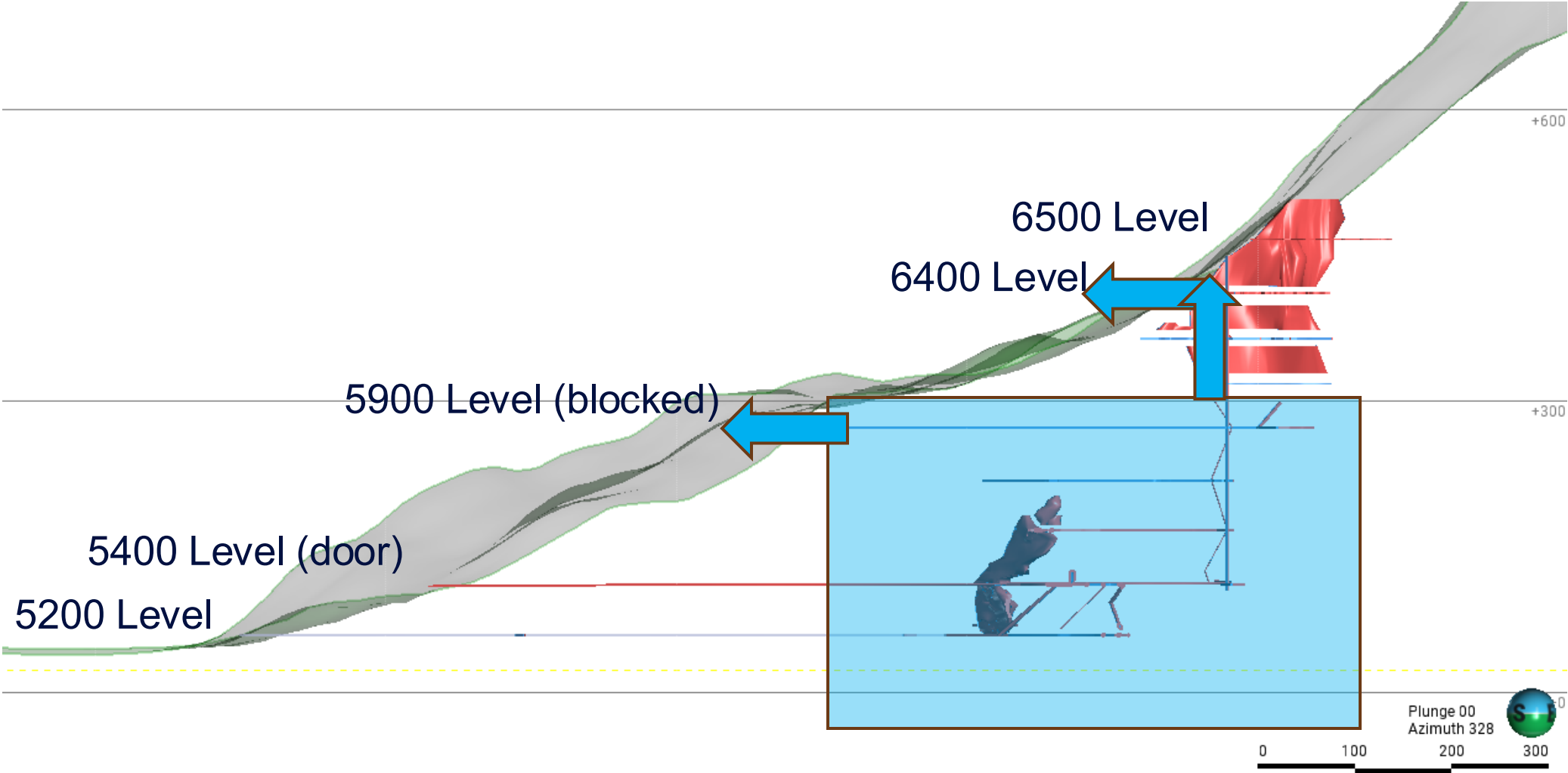


WATER AND SEDIMENT MONITORING

- Monthly water quality sampling May to September
- Sediment sampling May and September



COMPUTER MODEL - UNDERGROUND DISCHARGE



ENVIRONMENT



Understand aquatic risk to life in
Taaltsuxéi Héen

Understand what wildlife is in the area

Check soil for contamination around
site

Understand potential changes in
climate

Teck



WASTE



**Document volumes and types
(hazardous, non-hazardous) wastes on
site**

**Where possible, remove pre-existing
hazardous waste from site**



NEXT STEPS

What you can expect going forward

Teck, BC, and TRTFN will continue our collaboration on closure and reclamation planning

- A summary of this meeting, including your feedback, questions and ideas, will be shared in June 2025.
- Follow up engagement in the community is planned for early November 2025 to present findings from activities in 2025.



STAY CONNECTED



We Want To Hear From You

You can ask us questions, share concerns or provide feedback at any time by leaving us a voice message at **1.888.767.7706** or emailing legacyproperties@teck.com and our team will respond in a timely manner. Learn more about us at [Teck.com](https://www.teck.com)

You can also reach us at Teck's Corporate Office:
www.teck.com/about/contact

Teck Resources Limited

Cole Thomson

Acting Manager, Social Performance
1-587-225-2093

Cole.Thomson@teck.com

TRTFN

Rodger Thorlakson

Lands and Resources Manager
Government to Government Co-Chair
1-250-651-7900 ext. 204

Lands.mgr@govt.trtfn.com

BC Ministry of Mines & Critical Minerals

Andrew Rollo

Executive Director, Tulsequah
Reclamation 1-236-478-3641

andrew.rollo@gov.bc.ca

Teck

GUNALCHÉESH

QUESTIONS?