

# Tulsequah Chief Mine

## TRTFN Community Meeting

June 15, 2024



**Teck**

# Intention Of Today's Meeting



**Introduction** to Teck and BC Government Representatives



**Share background information** and objectives on Tulsequah Chief Reclamation Plan



**Share progress** in collaboration among TRTFN, Teck, and BC government for Tulsequah Reclamation Plan



**Questions & Discussions**

# Welcome And Overview Of The Day

## Welcome and Overview of the Day

Arrival & Refreshments; Housekeeping Announcements	10:15 a.m. - 10:30 a.m.
Welcome, Prayer, Opening Remarks	10:30 a.m. - 10:40 a.m.
Introductions of Teck, BC, & TRTFN Representatives	10:40 a.m. - 10:50 a.m.
TRTFN Overview of Collaboration with Teck and BC	10:50 a.m. - 11:00 a.m.
Teck Presentation: Overview Tulsequah Reclamation Plan	11:00 a.m. - 11:30 p.m.
Questions and Discussion	11:30 p.m. - 12:30 p.m.
Lunch	12:30 p.m. - 1:30 p.m.
Draws	1:30 p.m. - 2:00 p.m.
Conclusion of meeting	2:00 p.m.

# Introductions: Teck Resources



**Victoria Sterritt**  
Director, Legacy Properties,  
Teck Resources



**Stephanie Tissot**  
Manager, Social Performance,  
Teck Resources

# About Teck



**100+ years** of history as a Canadian company headquartered in **Vancouver, B.C.**



**13,000 direct employees** worldwide  
**9,000+ across Canada**



**10 total operations** in Canada, the U.S., Chile and Peru



**Top 100 Employer** in Canada for 2023

## Copper

A significant copper producer in the Americas. With QB2 as our cornerstone growth project, we have one of the best copper growth profiles in the industry.

- 1 Highland Valley Copper
- 2 Antamina
- 3 Quebrada Blanca
- 4 Carmen de Andacollo
- 5 Quebrada Blanca Phase 2

## Zinc

One of the largest producers of mined zinc globally. We operate one of the world's largest fully integrated zinc and lead smelting and refining facilities.

- 1 Red Dog
- 2 Trail Operations

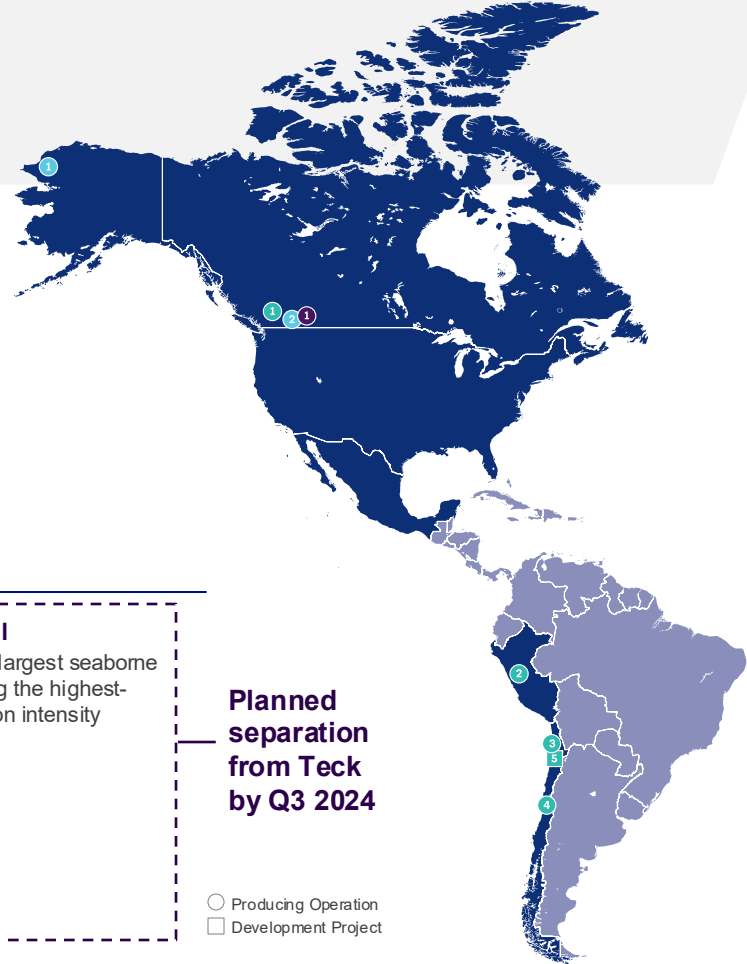
## Steelmaking Coal

The world's second largest seaborne exporter, with among the highest-quality, lowest-carbon intensity steelmaking coal.

- 1 Fording River  
Greenhills  
Line Creek  
Elkview

**Planned separation from Teck by Q3 2024**

○ Producing Operation  
□ Development Project



# Our Purpose and Values

## How They Work Together

### Our Purpose

To provide essential resources the world is counting on to make life better while caring for the people, communities, and land that we love.

## The Teck Way

### This is how we operate



#### Health and Safety

We are focused on ensuring everyone goes home safe and healthy every day.



#### Sustainability

We ensure the wellbeing of the people, communities, and environments we're entrusted with.



#### Excellence

We achieve leading performance through innovation and commitment to continuous improvement in efficiency and productivity.

### This is who we are



#### Responsible and Courageous

We do the right thing—even when it's hard or requires bold action.



#### Respectful and Inclusive

We believe everyone matters and we're better together.



#### Humble and Driven

We are open and we listen, learn, and do what it takes to deliver.

# About Legacy Properties

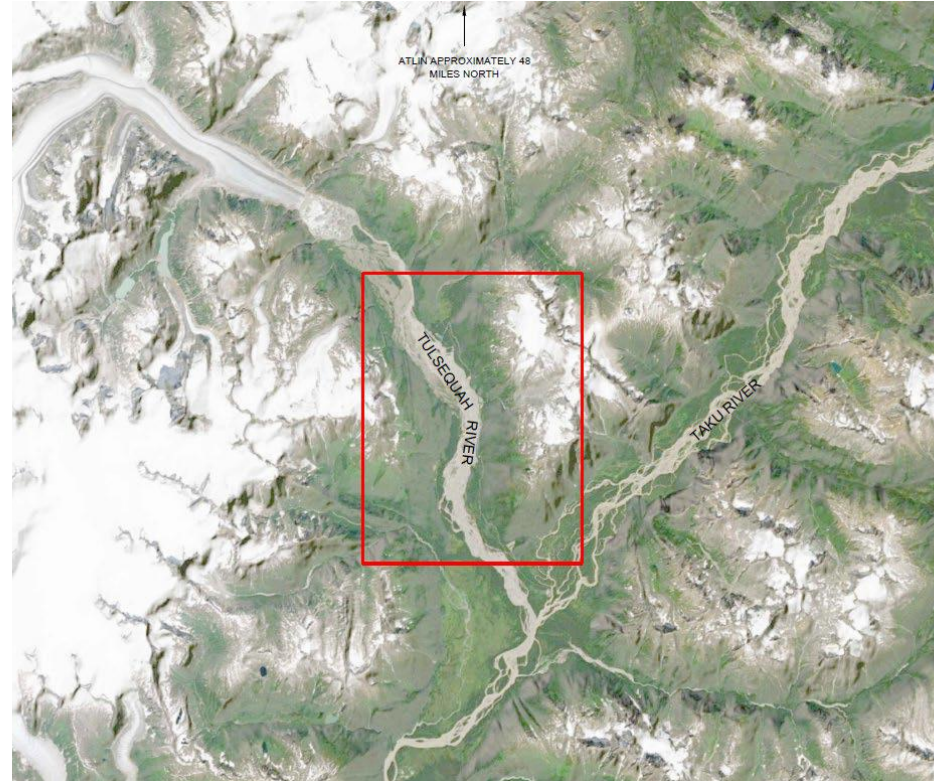
The Legacy Properties team is responsible for the responsible ongoing management of Teck's properties that were previously explored, constructed and/or operated (usually but not always) by Teck.

These properties are inactive (no longer being explored, developed, or operated) and are not expected to become active again (permanently closed).



# Background: Tulsequah Chief Mine

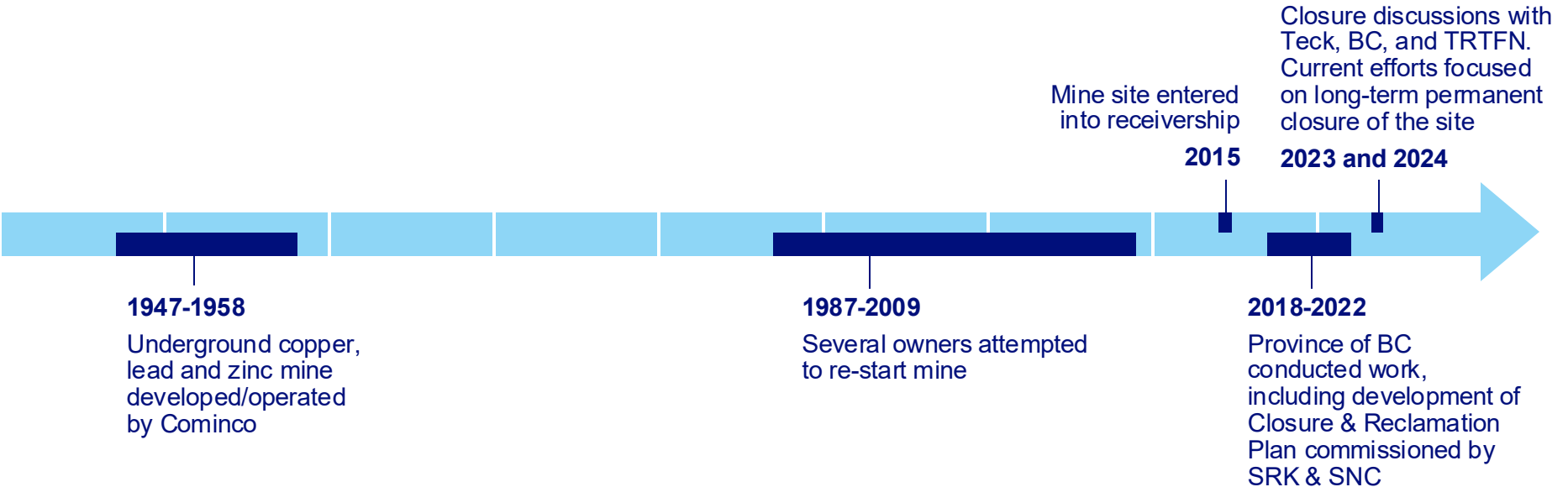
- Historic underground copper, lead, and zinc mine, operated from 1951-1957.
- Mine is located ~100 km southwest of Atlin, British Columbia, on the Tulsequah River, ~10 km upstream of its confluence with Taku River.
- Objective: Teck to work with TRTFN & BC Province on closure plan for mine site.
- Ownership: Teck does not own the site or facilities, nor do we hold mining rights.



# Background: Tulsequah Chief Mine



# Brief Timeline Of The Tulsequah Chief Mine



# Mutually Agreed Objectives Between Teck & TRTFN

(as per Letter of Understanding signed in July 2023)



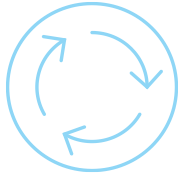
Collaboration between Teck and TRTFN in the development of a closure plan and review of available closure options



Avoid long-term water treatment



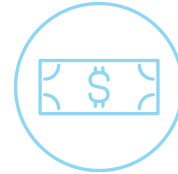
Use of mine reclamation process as a knowledge hub



Collaborative monitoring and application of Indigenous knowledge








Establishment of Steering Committee and Technical Working Group to oversee and support Closure Plan



Opportunities for economic participation in closure planning

# Work Completed By Teck To Date

✓		Funded road and bridge upgrade on site in 2021 and 2022 and initiated discussions with BC Province to define terms and conditions for Teck to advance closure plan for mine
✓		Advanced engagement with TRTFN, including drafting of Steering Committee and Technical Working Group Terms of References
✓		Reviewed and conducted technical evaluation of water management alternatives assessed by BC
✓		Identified business and contracting opportunities with Taku Corp
✓		Conducted initial site visit in May 2024 to inspect and prepare airstrip, helicopter landing spots and fuel storage locations

# Work Proposed To Start In 2024 Field Season, Carry Through 2025



## Safe Access

Establish safe, reliable access to site

Build temporary camp facilities to support fieldwork

Plan site visits with TRTFN & Taku Corp



## Underground (U/G)

Secure underground entrance and workings

Advance drone investigations of underground



## U/G Water Quality & Flow

Collect data on water quality, flow, and chemistry in underground



## Waste Rock

Quantify waste rock and ore stored on surface

Evaluate possible locations for long-term storage of waste rock and ore



## Temporary Water Treatment

Inspect and clean up existing water treatment plant

Assess need for refurbishments

Test operation



## Aquatic Monitoring

Collect water quality data from the Tulsequah River watershed

Collect samples of sediment, benthic invertebrates, and fish to characterize aquatic populations

# Summary



Teck working collaboratively with TRTFN and BC Government to develop a closure and reclamation plan for Tulsequah Chief Mine.



Series of field programs and site visits in 2024-2025. Field programs will inform the Tulsequah Reclamation and Closure Plan, to be developed in collaboration with TRTFN.



Ongoing engagement with TRTFN citizens and community members remains a priority for Teck and TRTFN.



Continued collaboration with Taku Corp to identify contracting and economic opportunities to support field programs.

# Questions & Discussion



# Get in Touch!



## We Want To Hear From You

You can ask us questions, share concerns or provide feedback at any time by leaving us a voice message at **1.888.767.7706** or emailing **[legacyproperties@teck.com](mailto:legacyproperties@teck.com)** and we will respond in a timely manner. You can also learn more at **[Teck.com](https://www.teck.com)**

If we don't meet our commitments or your expectations, you can also reach us at Teck's Corporate Office: **[www.teck.com/about/contact](https://www.teck.com/about/contact)**

### Teck Resources

#### Stephanie Tissot

Social Performance & Community  
Partnerships Manager  
1-778-222-2452  
[Stephanie.Tissot@teck.com](mailto:Stephanie.Tissot@teck.com)

### TRTFN

#### Rodger Thorlakson

Lands and Resources Manager  
Government to Government Co-Chair  
1-250-651-7900 ext. 204  
[Lands.mgr@govt.trtfn.com](mailto:Lands.mgr@govt.trtfn.com)

### BC Ministry of Energy, Mines and Low Carbon Innovation

#### Andrew Rollo

Executive Director, Tulsequah  
Reclamation 1-236-478-3641  
[andrew.rollo@gov.bc.ca](mailto:andrew.rollo@gov.bc.ca)