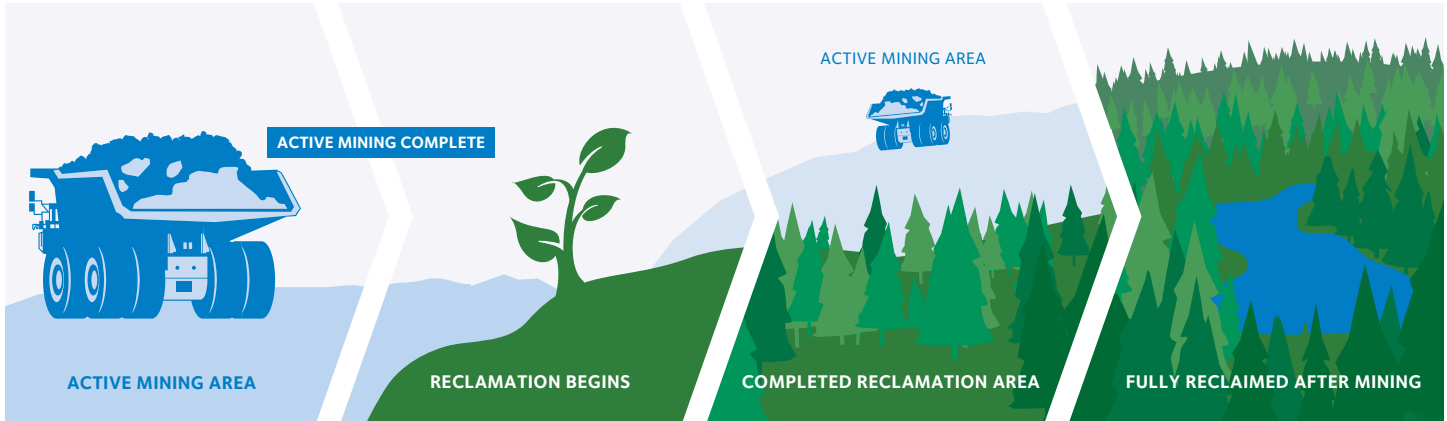




# Environmental Responsibility: Reclamation



Active mining area

Reclamation occurs as soon as active mining is done

Land is returned to a productive state while mining occurs elsewhere

The entire area is fully reclaimed within 15 years of mining completion at Frontier

## Progressive Reclamation: Restoring land at the same time as we mine.

Frontier will return land to a productive state soon after an area is mined, rather than waiting for all mining to be completed.

This means not only will land be restored more quickly, but the actual footprint of active mining at any given time will be smaller than the total project area.

Progressive reclamation will include both mining and tailings areas. It is expected that the entire area of operations – including mining and tailings areas – will be reclaimed within 15 years of the completion of mining at Frontier.



### Teck: A strong legacy of reclamation and site closure

The plan for progressive reclamation at Frontier builds on a 100-year tradition of responsible mine reclamation at Teck.

Wherever Teck operates, we focus on reclaiming the land for post-mining land uses and healthy ecosystems. We are pioneers in mining reclamation, and have led the research and development of industry's best practices and improved reclamation techniques.