



# Teck Private Land Use and Stewardship Information

## Elk Valley and Flathead



### Land Use Expectations

The lands outlined on the map are privately owned by Teck. We welcome and support your responsible use of these lands but ask that you contribute to their integrity and longevity by following the stewardship guidelines below:

- Please respect and follow all signage.
- Access is at your own risk.
- For your safety, we recommend the use of radios on the appropriate channel when accessing roads that may be used for timber harvest or other industrial activity.
- Where camping is permitted, limit stays to a maximum of 14 days to allow others to use the sites. Please do not leave camping units or fires unattended.
- Remove/correctly dispose of all garbage and waste. The unauthorized discharge of gray or black water holding tanks is strictly forbidden and may be subject to penalty.

- Many of our lands include motorized vehicle use prohibitions to protect and manage for stewardship values. Please ensure you are aware of these restrictions, that you respect the stewardship purpose for the restrictions and that you do not drive onto trails and roads that are not designated. This includes e-bikes.
- Do not force open or otherwise vandalize locked gates or designated camping sites.
- The cutting of live trees and new ground disturbance is prohibited.
- Obey notifications for fire bans and manage any permitted fires in a safe and responsible manner.
- Please report all instances of illegal activity. Please note, hunting within Teck's No Unauthorized Entry boundary is a violation under the *Wildlife Act*.

For land use guidelines from the Provincial Government, please visit: <https://www.env.gov.bc.ca/kootenay/eco/access.htm>

### R.A.P.P.: Report All Poachers and Polluters

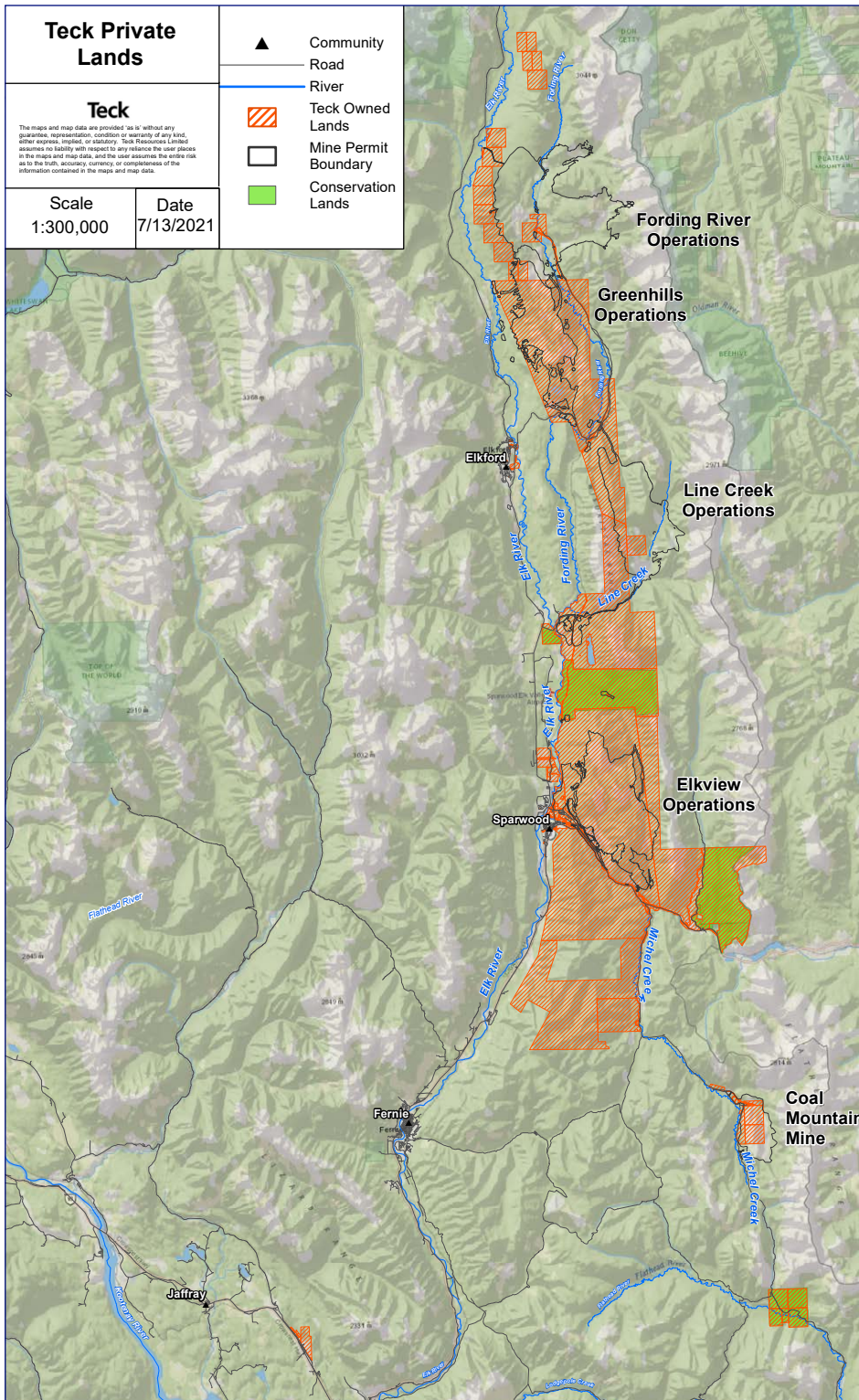
Use the toll-free tip line to report known or suspected violations of fisheries, wildlife, or environmental protection laws anonymously and without risk of confronting the offender.

Conservation Officer 24 Hour Hotline: **1.877.952.7277 (RAPP)** or dial **#7277** from a mobile phone.

Also call the hotline to report wildlife-human interaction where public safety may be at risk.

Please visit:

**[www2.gov.bc.ca/gov/content/home](http://www2.gov.bc.ca/gov/content/home)** and search for Report all Poachers for more information.



## Our Approach to Land Management

The Teck lands in the Elk Valley and Flathead are located in **ʔamakʔis Ktunaxa**, the traditional lands of the Ktunaxa Nation. Both the Ktunaxa Nation and Teck recognize the importance of working collaboratively with communities of interest, user groups and the provincial government to carry out a successful land management strategy.

The lands have been managed as a community asset for several decades and provide important habitat for numerous species, such as grizzly bear, wolverine, badger, elk, lynx, mountain goat, bighorn sheep, westslope cutthroat trout and bull trout. They also hold significant cultural and community value.

## Conservation Lands Joint Management Agreement

In 2021, the Ktunaxa Nation and Teck signed a Joint Management Agreement for more than 7,000 hectares of land purchased by Teck in 2013 for conservation. The lands are located in **ʔamakʔis Ktunaxa** and in the region of Teck's steelmaking coal operations in southeast British Columbia.

Under the Agreement, the Ktunaxa Nation and Teck agree to jointly manage the lands for conservation purposes, protecting significant fish and wildlife habitat, aligning with the Ktunaxa Nation Stewardship Principles, and supporting Teck's goal to achieve a net positive impact on biodiversity in the areas where it operates.

## Access Maps

For access boundary maps and electronic coordinates for Teck's Elk Valley operations, please visit: [www.teck.com/coalmaps](http://www.teck.com/coalmaps)

## We Welcome Feedback

You can provide feedback about Teck's operations in the Elk Valley via phone at **1.855.806.6854** or via email to [feedbackteckcoal@teck.com](mailto:feedbackteckcoal@teck.com).

Feedback can be left anonymously but if you leave your contact details we will always follow up with a response.