

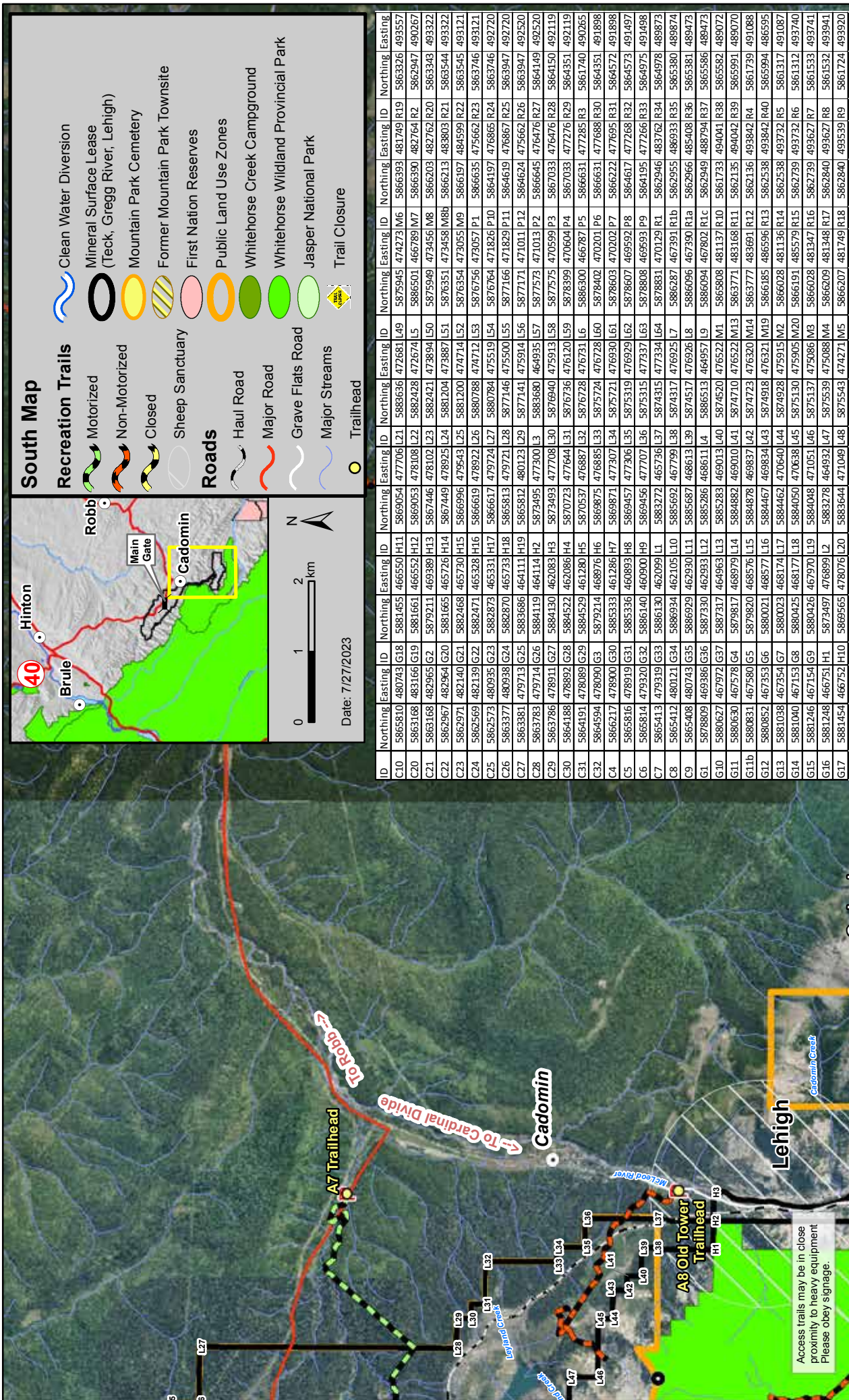
Printed August 2023

South Access Map

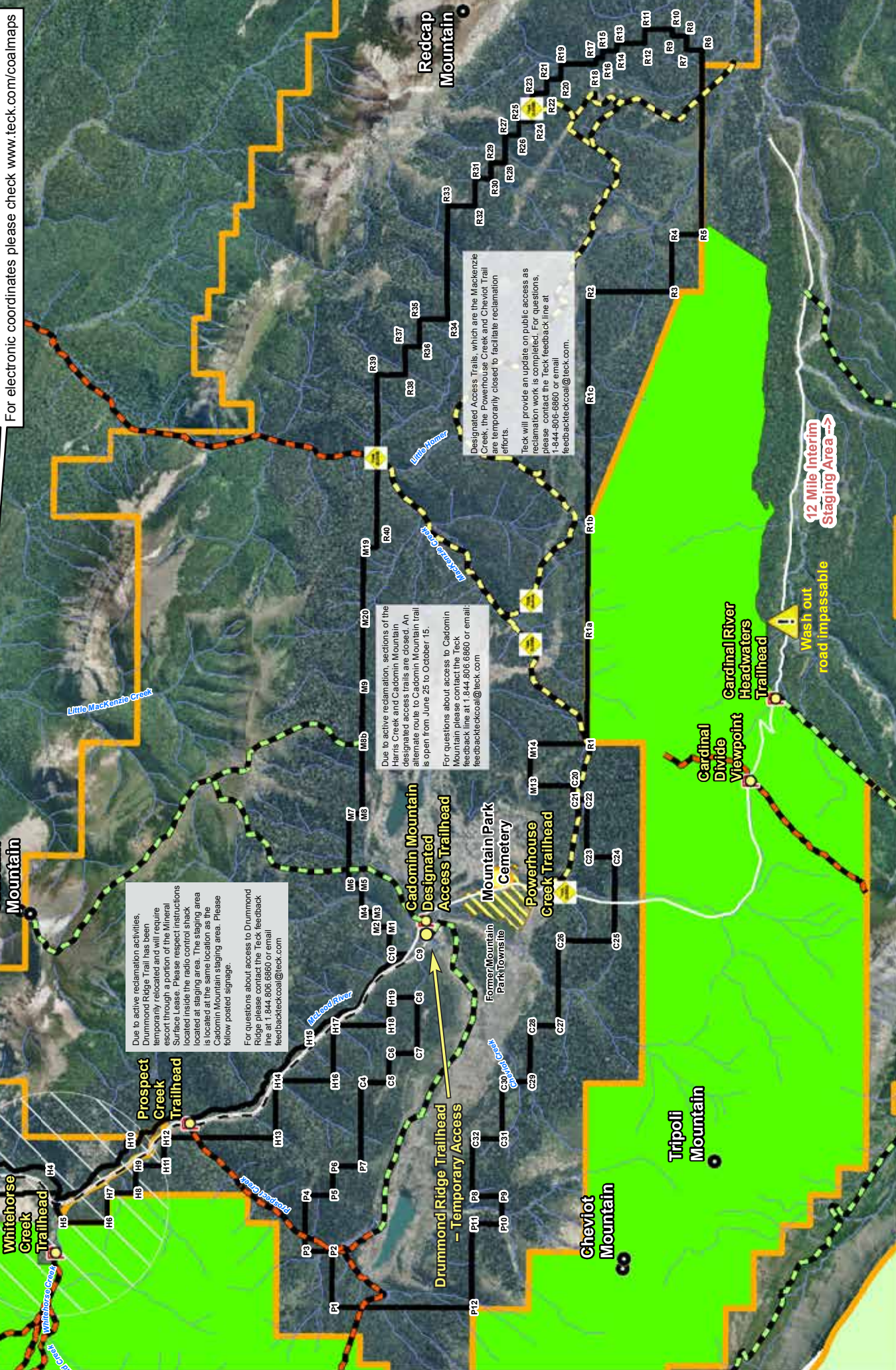
North Access Map



Printed August 2023



ID	North	East	Easting ID	Northing ID	Easting ID	Northing ID	Easting ID	Northing ID	Easting ID	Northing ID	Easting ID	Northing ID								
C10	5865810	480743	G18	5881455	466550	H11	5888636	477261	L49	5875945	474273	M6	5866393	481749	R19	5863326	493557			
C20	5863168	483166	G19	5881661	466552	H12	5890063	478108	L22	5882428	472674	L5	5865501	466789	M7	5866390	482764	R2	5862947	490267
C21	5863168	482965	G20	5879211	466388	H13	5867446	478102	L23	5882421	472674	L50	5875949	473456	M8	5866203	482762	R21	5863343	493322
C22	5862957	482964	G20	5881665	465726	H14	5867449	478925	L24	5881200	474174	L52	5876354	473055	M9	5866197	484599	R22	5863545	493321
C23	5862971	482140	G21	5882468	465730	H15	5866996	479543	L25	5881200	474174	L52	5876354	473055	M9	5866197	484599	R22	5863545	493321
C24	5862569	482139	G22	5882471	465328	H16	5866619	478922	L26	5880788	474172	L53	5876756	473057	P1	5866635	475662	R23	5863746	493121
C25	5862573	480935	G23	5882873	465331	H17	5866617	479724	L27	5880784	475519	L54	5876764	471826	P10	5864197	476885	R24	5863746	493121
C26	5863377	480938	G24	5883870	465733	H18	5865813	479721	L28	5877446	475500	L55	5877171	471001	P11	5864624	475662	R25	5863947	493220
C27	5863381	479713	G25	5883686	464111	H19	5865812	480123	L29	5877446	475500	L55	5877171	471001	P11	5864624	475662	R25	5863947	493220
C28	5863383	479714	G26	5884119	464114	H20	5872495	477300	L30	5883680	464935	L57	5877573	471031	P2	5866645	476476	R27	5864149	493250
C29	5863786	478911	G27	5884130	462083	H20	5872493	477708	L30	5876940	475913	L58	5877573	470599	P3	5867093	476476	R28	5864150	493250
C30	5864188	478892	G28	5884522	462086	H4	5870723	477644	L31	5876736	476120	L59	5878399	470604	P4	5867093	476476	R28	5864150	493250
C31	5864191	478089	G29	5884529	461280	H5	5870537	476887	L32	5876736	476120	L59	5878399	470604	P4	5867093	476476	R28	5864150	493250
C32	5864594	478090	G3	5879214	468876	H6	5869875	476885	L33	5875724	476728	L60	5879402	470201	P6	5866631	477285	R3	5864351	491898
C4	5866217	478900	G30	5885336	461286	H7	5869871	477307	L34	5875721	476930	L61	5878608	470202	P7	5866222	477695	R31	5864572	491898
C5	5865816	478919	G31	5885336	460893	H8	5869457	477306	L35	5875319	476929	L62	5878607	469592	P8	5864617	477286	R32	5864573	491497
C6	5865814	478919	G32	5886140	460900	H8	5869456	477707	L36	5875315	476929	L63	5878608	469593	P9	5864919	477286	R32	5864573	491497
C8	5865412	480121	G34	5886934	462105	L10	5885692	467799	L38	5874315	477394	L64	5879402	470129	R1	5862946	483623	R34	5864978	489873
C9	5865408	480743	G35	5886929	462930	L11	5885687	468613	L39	5874517	476926	L8	5886096	467390	R1a	5862946	483623	R34	5864978	489873
G1	5878809	469386	G36	5887330	462933	L12	5885286	468611	L4	5885513	464957	L9	5886094	467802	R1c	5862949	483623	R37	5865586	489473
G10	5880067	467972	G37	5887317	464963	L13	5885283	469013	L40	5876210	476522	M1	5863708	481137	R10	5861733	494041	R38	5865982	489072
G11	5880650	467578	G4	5879817	468979	L14	5884882	469010	L41	5874710	476522	M13	5863771	483168	R11	5862136	493842	R40	5865991	491088
G11b	5880831	467353	G6	5880021	468576	L15	5884878	469837	L42	5874723	476520	M14	5863777	483168	R11	5862136	493842	R40	5865991	491088
G12	5880852	467353	G6	5880021	468576	L15	5884878	469837	L42	5874723	476520	M14	5863777	483168	R11	5862136	493842	R40	5865991	491088
G13	5881038	467354	G7	5880023	468174	L17	5884462	470640	L44	5874928	475915	M2	5866028	481136	R14	5862538	493732	R5	5861317	491087
G14	5881038	467153	G8	5880425	468177	L18	5884050	470638	L45	5875130	475905	M20	5866191	485579	R15	5862739	493732	R6	5861312	493740
G15	5881246	467154	G9	5880426	467970	L19	5884048	471051	L46	5875137	473086	M3	5866028	481347	R16	5862739	493732	R6	5861312	493740
G16	5881248	466751	H1	5872497	476899	L20	5883278	464932	L47	5875539	475088	M4	5866209	481348	R17	5862840	493627	R8	5861532	493941
G17	5881454	466752	H10	5869565	478076	L20	5883644	471049	L48	5875543	474271	M5	5866207	481749	R18	5862840	493627	R8	5861532	493941



Teck, Cardinal River Mine and Public Access

In June 2020, Cardinal River Mine reached the end of its mine life after 51 years of operation. The Powerhouse and Mackenzie Creek designated access trails are temporarily closed. Teck is making the MacKenzie and Redcap exploration areas a priority for reclamation as part of Teck's efforts on environmental management and land certification. These trails will be re-opened when reclamation is completed and the area is safe to be used again.

For updates on Teck, Cardinal River Mine and public access please contact Teck at 1.844.806.6860 or by email: feedbackteckcoal@teck.com.

Site Security and No Hunting Boundaries

Be aware of no hunting boundaries to prevent accidental poaching. Any area within our Mineral Surface Leases (MSL) is a NO HUNTING ZONE, even if it is within the Wildlife Management Unit boundaries. We have provided downloadable GPS coordinates on our website (www.teck.com) to help determine if you are within our boundaries.

Never access the Mineral Surface Leases area except through designated access trails. Trespassers will be prosecuted. Please note that video surveillance is in use throughout the site. For current public access information, please refer to teck.com/coalmaps or contact Cardinal River Mine directly (1.844.806.6860).

It is important to note this map is only current to its publication date. For the most up to date version of our maps please refer to our website.

Report a Poacher

The Report A Poacher program relies on hunters, anglers and outdoor enthusiasts to report suspected illegal activities. If you see suspicious activity, call the Report A Poacher (RAP) hotline at 1.800.642.3800. By reporting suspected poaching activities, you can help prevent human threats to Alberta's wildlife and habitat.

For more information, please go to www.reportapoacher.com

Safety

At Teck, we believe we can achieve our primary vision of everyone going home safe and healthy every day. Here are some tips to help keep you safe while hunting:

- Do not hunt alone
- Wear hunting orange and bring a flashlight so other hunters do not mistake you for game
- Always treat your gun as if it is loaded
- Be certain of your target and its surroundings to avoid accidents and injuries
- Be extra alert at dawn, night and dusk, as this is when bears are most active
- Be extra cautious in areas where bears may feed, like berry patches, grain fields and carcass sites
- When returning to a kill site, view the site from a distance using binoculars and then approach from upwind while making a lot of noise
- If a bear finds your kill site, do not try chasing it away. Instead, leave the area immediately and contact your nearest Fish & Wildlife office